

CASE GALORE

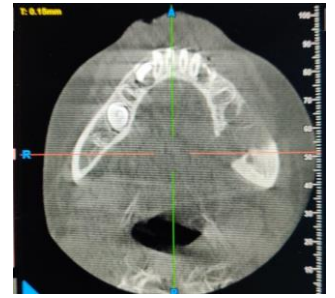
Oral medicine and radiology of Chettinad Dental College visions in investigating an array of cases and followed-up with their management.



HEMANGIOMA



OSTEOMYELITIS



TUBERCULOUS OSTEOMYELITIS



CARCINOMA OF RIGHT LATERAL BORDER OF TONGUE



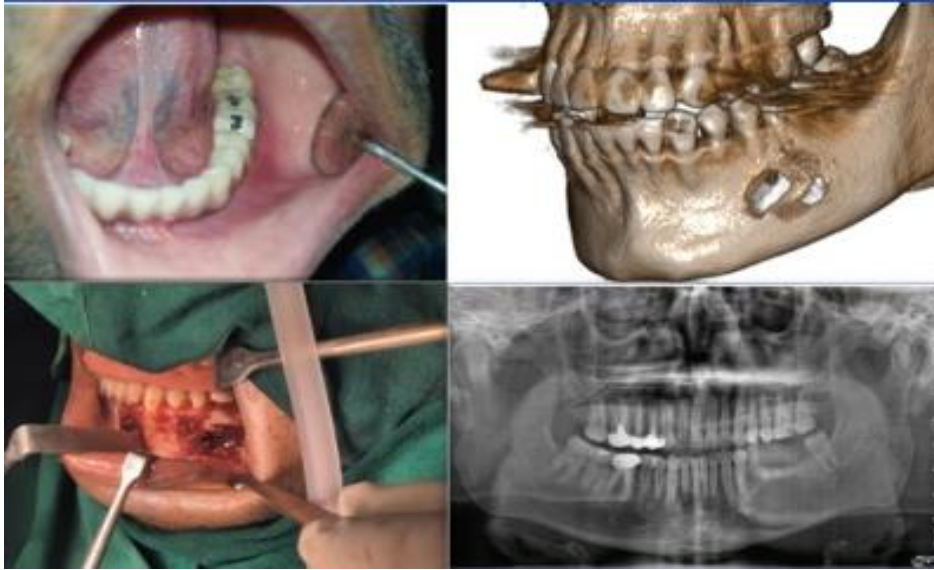
SOFT TISSUE NEOPLASM OF RETROMOLAR TRIGONE



EROSIVE LICHEN PLANUS



POST HERPETIC NEURALGIA



RADICULAR CYST



LEUKOPLAKIA



TRAUMATIC ULCER



DENTOALVEOLAR ABSCESS



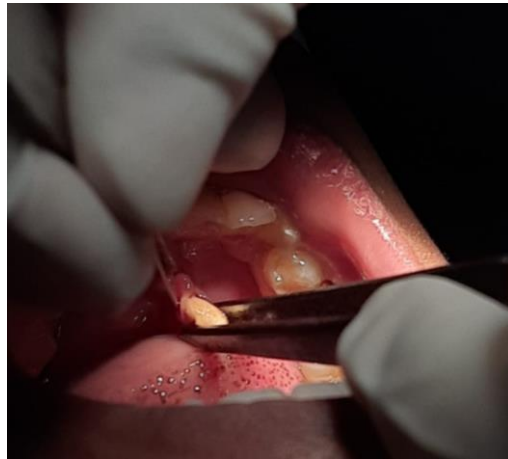
FASCIAL SPACE ABSCESS



TUBERCULOUS SIALADENITIS



MUCORMYCOSIS OF PALATE



SUBMANDIBULAR SIALOLITHIASIS



ORAL LICHEN PLANUS



ORAL SUBMUCOUS FIBROSIS



ERYTHEMATOUS CANDIDIASIS



ERYTHEMA MULTIFORME



PRE-TREATMENT AND POST TREATMENT PICTURES OF ERYTHEMATOUS CANDIDIASIS



ALLERGIC STOMATITIS



CANDIDIASIS ON THE TONGUE